

EE / CprE / SE 491 – sdddec23-11

## HOME FINDER

### Week 7 Report

03/26/2023 – 04/2/2023

Client: Dr. Bigelow

Faculty Advisor: Dr. Bigelow

#### Team Members:

Christian Boughton – Team Member

Daniel Chrisman – Team Member

Ella Knott – Team Member

Lith Almadani – Team Member

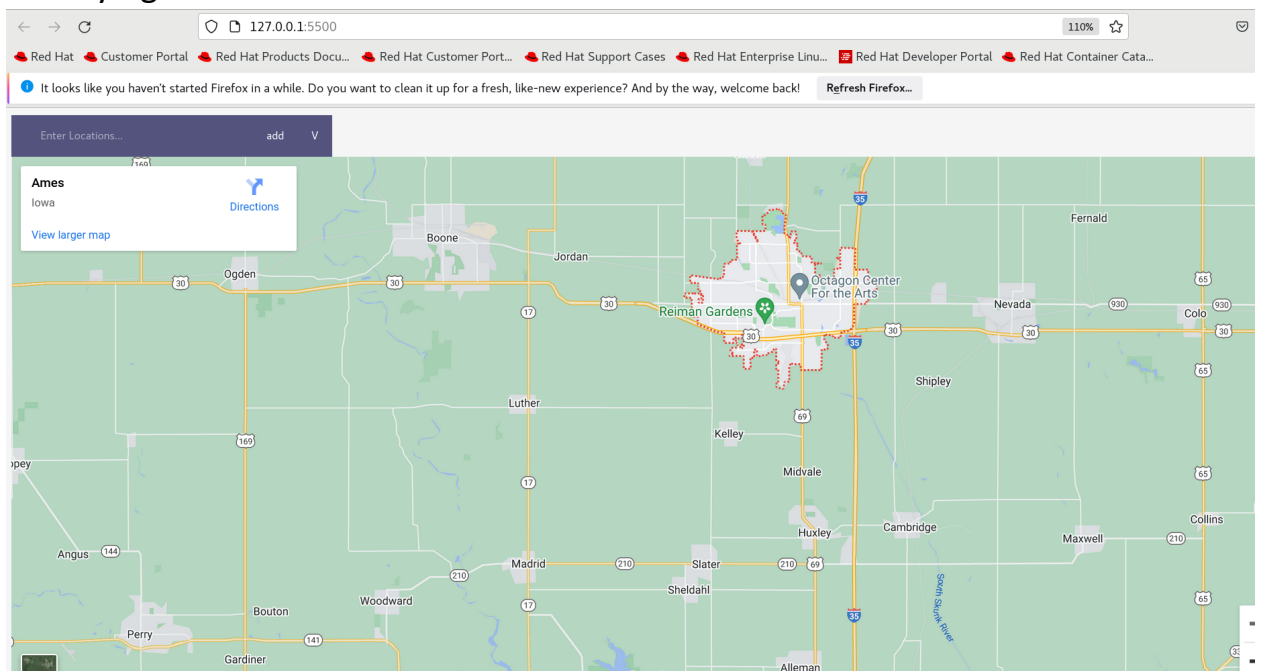
Michael Wieland – Team Member

#### Summary

The overall objective for this week was to begin the development of the website functionality. This aspect was not put in full effect last week, so we will continue this through this week with the hopes of having a fully functional front-end design by the end of the semester to allow us to focus next semester on functionality, professionalism and tweaking the site to be the best it can with the time we have.

#### Past Week Accomplishments

- We ensured that google maps could be run as a mutable background with overlaying elements.



- Started the front-end design and decided on basic functionality needs
  - Easy navigation of the website

- Clear typography
- Easy readability
- Met to decide what we want the site to look like so we can all be on the same page when visualizing what is expected.
  - The website will function similarly to Zillow. The user will be able to input locations and the importance of reaching there in a specific amount of time and frequency from location to location. For instance, home to work, work to daycare, and daycare to home. These inputs are calculated, and a home location based on that criteria will be generated via a heat map. Each color of the heat map can be clicked on. Once clicked, the left side of the screen will pop up with a scroll bar where you can scroll through the houses in that area that Zillow has to offer. You can click the properties and find a home there, or know the location and use another site the user decides best suits them.
  - Similarly to homes, you can find a business location. Inputting preferences similarly such as busy intersection, a desired area from your home, easy access, large traffic area, etc. A heat map will then be generated to help focus the users' search for a business front.

### Pending Issues

- Acquisition of a hosting platform for the website
  - Pay for a hosting platform or use a free domain that is less professional and may bring issues, such as requests to the page.

### Individual Contributions

<u>Name</u>	<u>Contributions</u>	<u>Hours this week</u>	<u>Hours cumulative</u>
Christian Boughton	Research, planning, and design Weekly assignments	6	45
Daniel Chrisman	Research, planning, and design Weekly assignments	6	42
Ella Knott	Research, planning, and design Weekly assignments	6	41
Lith Almadani	Research, planning, and design Weekly assignments	6	42
Michael Wieland	Research, planning, and design Weekly assignments	6	42

## Plans for the Upcoming Week

- Continue development of the front-end system
- Have a more detailed design for the screens intended to be used.
  - Design ideas, visualize the layout better, how we move across the website
- Decide how we want to save user information and have users input the information
  - Through their account to save it, or each time they use the app, or pre-save it regardless.